

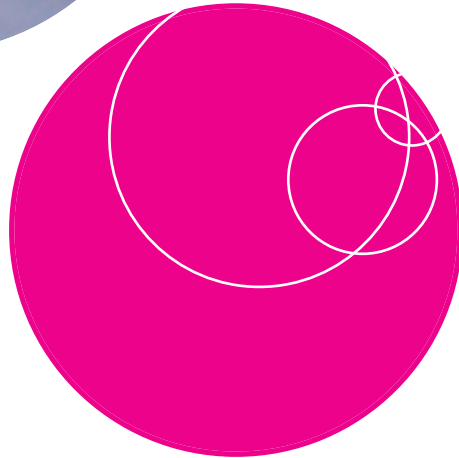
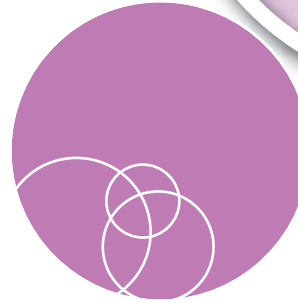
Carmarthenshire Family Centres

Family Support Services for the Children of Carmarthenshire and their Families

Strengthening Families



Where they are...
What they do...
How to access them...
How they are different...



Introduction

I am delighted to introduce our Brochure on family centres in Carmarthenshire. The brochure aims to inform professionals and the public where the nearest family centre is, what they do, how they can be accessed and how they compliment each other in the services they offer.

There are four different types of family centres in Carmarthenshire; twelve open access family centres, three Integrated Children's centre, two Resource Centres and a Mobile Family Bus. Each one offers a unique set of services developed with local communities the voluntary sector and statutory agencies to meet local needs and to support children and families in our most vulnerable communities.

The centres featured in this brochure are part of a wide range of award winning family support services in the County and we are justifiably proud of the exceptional services they offer. The success of the centres has been recognised and validated by both the CSSIW and a number of external independent evaluations. My thanks go to the staff and volunteers who make this success possible and of course to the children who make each centre so vibrant and full of life.

Jake Morgan

Head of Children's Services

Carmarthenshire Education and Children's Services.

Content

- Integrated Children's Centres
- Carmarthenshire Resource Centres
- Mobile Family Bus
- Plant Dewi Family Centres
- Family Centres

3-4

5

6

7

8-19

Integrated Children's Centres

NON-STATUTORY/OPEN ACCESS

The Welsh Assembly Government set a target for each Local Authority to develop at least one integrated children's Centre in each County.

Integrated Children's Centres offer a network of services which support children aged 0-14years and their families providing integrated education, childcare, family support and health services in order to determine good outcomes for children and their families.

In January 2007 the first integrated centre opened in Llwynhendy, Llanelli. The centre was funded by Objective 1, Big Lottery, Cymorth and Carmarthenshire County Council. The centre offers various services including childcare, open access play, family support, training and community development.

As part of Carmarthenshire's modernising education programme two further children's centre were opened in 2010/11 at Morfa and Felinfoel as part of the newly constructed Ysgol Maes Y Morfa, and Ysgol Maes Y Felin provisions.

Children's Services are responsible for the strategic direction of all three centre's but work in partnership with school's, health, Flying Start, CAVS and Plant Dewi who directly provide services at Morfa and Felinfoel.

Children's Centres are unique to each community and develop to meet the needs of children and parents in each locality.

For further information on the range of services provided at each centre contact 01554 775 390 or refer to the information within this booklet.



Llwynhendy Felinfoel Morfa



Canolfannau Plant Children's Centres



Llwynhendy, Morfa and Felinfoel Children's Centres differ from the Plant Dewi family centres because they offer structured services at specific times. Even though the Children's Centres are open access facilities they are not drop in venues and provide more formal settings than family centres. The Children's Centres offer complimentary services to family centres.

The Children's Centres offer the following services:

Activities For Children include...

- Early years Education for children aged 2-3 years under the Flying Start programme
- Open Access Play for children aged 7 up to 14 years old

Activities For Adults include...

- A range of programmes are offered to support parents in developing skills to assist with the important role of being a parent or skills that can be used in the work place. Programmes are facilitated in partnership with other agencies e.g. New Wave Training
- Introduction to Computer Skills
- Welsh Beginners
- Behaviour Management
- Incredible Years Programme
- First Aid
- Parent Craft / Antenatal

Activities To Do Together include...

- Language and Play
- Breastfeeding Support Group
- Baby Massage
- Baby Clinic
- Family Fun Days

Contact Details

Address

Llwynhendy Children's Centre
Off Llwynhendy Road
Llwynhendy
Llanelli
SA14 9DP

Morfa Family Centre
Ysgol Maes Y Morfa
School Road
Morfa, Llanelli
SA15 2AP

Tel No 01554 775390

Tel No 01554 742402

Ty Haul Family Centre
Ysgol Maes Y Felin
Ynyswen
Felinfoel, Llanelli
SA14 8BE

Tel No 01554 742498

Please remember the programmes change to meet the needs of the communities, therefore it is recommended that you contact the centres for an up to date timetable of activities.

Carmarthenshire Children's Services Resource Centres

STATUTORY/REFERRAL ONLY

There is another type of Community Resource Centre sometimes referred to as a 'Family Centre'.

There are two centres, one based in Carmarthen 'Argel' and the other on the outskirts of Llanelli 'Tŷ Gelli'.

Tŷ Gelli family centre is part of the Family and Community Team of Carmarthenshire Childrens Services. It is registered with the CSSIW to run a playgroup twice a week and their report says there is a high standard of childcare. The centre has a specialist play area for pre school children with disabilities to promote development of other children who have need of high quality care. The sensory room is very calming and reassuring as well as providing stimulation for children.

The experienced staff provide a warm and welcoming place for families who are referred by social workers and health professionals. There are a range of activities including courses to share ideas of positive ways to parent your child. It has the feel of a family home, with kitchen facilities and play rooms. Families feel at home, and their comments reflect their appreciation of the work done.

"My son has enjoyed his time in Argel and will miss going there as the staff are excellent and caring towards the children and I would recommend Argel to anyone."

"Argel provides a much needed service to people like myself, long may it last. The women who run it are friendly and the children think very highly of them."

"We would like to thank you all for being so helpful".

Argel Family Centre was set up thirty years ago, it is now located in the bungalow in the grounds of Argel in Carmarthen. The Centre specializes in a pre-school playgroup for children who will benefit from high quality childcare before they go to school. Children are referred by social workers and health professionals where their needs are clearly going to be met by the very varied range of activities on offer every day. The outside play area has lots of equipment for the children to enjoy, in addition to the impressive collection of toys inside.

The Centres are registered by the Care and Social Services Inspectorate for Wales (CSSIW). The CSSIW report is very complimentary about all aspects of the centre, including the close partnership with parents that the staff have. Families feel welcome and children are the centre of attention. A bus service is available to families to collect the children and take them home again.

Unlike the Centres on the other pages of this brochure, these two are not available to anybody just walking in (i.e. not 'Open Access'). In order to access these Centres children and their families need to be referred by their social worker or by a professional employed in Health or Education.

These Centres are run entirely by Carmarthenshire County Council and are specifically for children who might require a specialist service.

For further information please contact:

**Argel on 01267 234520
Ty Gelli on 01554 773723**





Mobile Family Bus

Open Access

The Mobile Family Bus is one of the services developed under the Sure Start Programme. The Bus was instrumental in the early days in helping to set up management committees working in partnership with Plant Dewi to develop family centres which are now fully operational. The Mobile family Bus now provides a service by visiting targeted communities for a period of time where there is a lack of other services.

The barrier of rurality and transport is overcome as the bus is able to visit the areas affected by such barriers and to offer services to where they are most needed. The intention is to try and integrate families in to services which are available in the community when the Bus moves on.

The Mobile Family Bus provides an open access service to families with children 0-10 years. The mobile provision is part of the Family And Community Team (F.A.C.T) who work in partnership with Action For Children and Carmarthenshire County Council.

The Bus provides a warm and friendly environment where parents/carers can take their children to access a range of activities to promote their social, emotional and physical development.

The Bus has been adapted to provide a range of play opportunities for children including a sand pit and water tray, painting easel, work surfaces for art and craft as well as a play area with toys, books, puzzles and dress up clothes.

Other activities on offer include; courses, help, information and advice to parents/carers and will also provide crèche facilities for parents wanting to partake in any of the learning activities.

You can find out more about the Bus and the communities that it is currently visiting by contacting the F.A.C.T on 01554 745150



"The Dragon Bus gives youngsters opportunities to play learn and interact with others. It also gives mums and dads the chance to meet and talk with each other which I know can be really valuable if you're looking after children all day. Everyone

connected with the Dragon Bus should be really proud of the services it provides.

You can see just how well loved the bus is – the youngsters who came along to the launch were chomping at the bit to get on it!" **Scott Quinell**

To date the Bus has visited; Llandybydder, Trimsaran, Tumble, Pencader, Felinfoel, Morfa, Pantyffynon, Upper Brynamman, Penyfan, Seaside, Kidwelly, Llandybie, Pembrey, Llwynhendy, Burry Port, Bancyddraenen, Capel Hendre, Pontiets, Pontyberem, Ponthenri, Llangennech, Crosshands, Ammanford.

PLANT DEWI



NON STATUTORY /OPEN ACCESS

A network of 12 non-statutory, open access family centres have been developed across Carmarthenshire (9 of which were developed under Sure Start Initiative).

The Family Centres are located at; Betws, Garnant, Tumble, Trimsaran, Pencader, Llanybydder, South Cefn Caeau, Felinfoel, Morfa, Carmarthen x 2 and St Paul's in Llanelli.

How the centres were developed and who was involved

A community development model was used to establish the centres working in partnership with Plant Dewi and Action For Children / F.A.C.T. The Mobile Family Centre (Action For Children / F.A.C.T) was used as a catalyst and would visit the selected communities, bringing people together from the local community to form management committees and in turn developing Family Centres. Each centre is registered as an individual charity.

Plant Dewi in association with the St Davids Diocesan Council for Social Responsibility receive funding annually through the Children's Partnership (WAG – Cymorth Fund) and act as a support network for the family centres in Carmarthenshire.

The aim is to provide families across Carmarthenshire with support via venues in targeted areas of need. Parents are offered courses on various subjects including language and play, healthy eating, computer courses, parenting courses etc. Families are provided with a range of activities including craft activities, family fun days out, outdoor play, lunch clubs and much, much more!

The Network of Family Centres – in Partnership with Plant Dewi

Plant Dewi employs Project workers to work closely with Family Centre staff to provide centres that are safe, sustainable and achieve positive outcomes for children.

Plant Dewi has brought all the centres together to form a Carmarthenshire Family Centre Network. The network is constituted and meets to share and develop practice. To date it has produced a framework for practice, provided training programmes, attracted funding to engage a consultant to research family centre sustainability, produced information leaflets and held two annual Conferences.

Plant Dewi has a remit to improve the quality of life for children, young people and their families. As part of this work Plant Dewi has worked with people in their communities to establish centres that offer support to families with young children. Local people have been supported to form committees, gain charitable status, attract funding and employ staff. Local authority houses, disused chapels and unused land have been transformed into family centres. Plant Dewi continues to support the centres to ensure a safe, quality service. Each family centre is unique in design but families can be assured that each provides a welcome and a place where they are supported to do one of the most difficult jobs in life, that of being a 'parent'.

In addition to the family centres Plant Dewi runs 8 Families Together Groups. The groups are based in local community halls and are based in; Upper Brynamman, Penyfan, Llandybie, Kidwelly, Llandeilo, Saron, Laugharne and Newcastle Emlyn. They offer Families support and the opportunity to socialise.

For further information please phone Plant Dewi on: 01267 221551



Betws Family Centre

Tŷ Tyfu

Tŷ Tyfu is a safe, free, open access family centre, where parents and pre-school children can spend quality time together.

ACTIVITIES INCLUDE:

- * Family Fun Days
- * Health Visitor Clinic
- * Messy Play Sessions
- * Outdoor Play
- * Early Learning Support
- * Older Siblings in the Holidays
- * Welsh Language Sessions
- * Parent & Toddler Group
- * Outings & Daytrips
- * Art & Craft
- * Toys & Books
- * Help & Advice
- * Sensory Room

OPENING TIMES

Tuesday 9.30am - 2.30pm

Wednesday 9.30am - 2.30pm

Thursday 9.30am - 1.30pm

"We really enjoy coming to the centre, it gives the children the chance to play with other children and do lots of activities and the staff are really friendly"

Ty Tyfu Family Centre
19 Treforis
Betws
Ammanford
SA18 2RA

All Enquires:-

Call 01269 595378

betwsfamcentre@btconnect.com



Felinfoel Family Centre @ Felinfoel Children's Centre



Tŷ Haul

At home with a baby or toddler? Wish there was a friendly place where you could go to meet new people, have a chat and play with your little ones? Then come on down to Felinfoel Family Centre, based in the beautiful and spacious Felinfoel Children's Centre.

ACTIVITIES INCLUDE:

- * Parent & Toddler Group
- * Dad's Group
- * Parent/child play together sessions
- * Story and Songtime
- * Outings and Daytrips
- * Special Days and Events throughout the year
- * LAP/NAP
- * Lunch Club
- * Courses and workshops
- * Family Art sessions
- * Outdoor Play Sessions
- * Baby Massage
- * Parent Timeout session

"The staff are really friendly and coming to the centre has helped me move on to other things."

OPENING TIMES

The centre is open 5 days per week with services to support families.

Monday & Tuesday Centre operated by Flying Start

Tuesday 9.30am – 2.30pm

Wednesday 9.30am – 2.30pm

Thursday 9.30am – 2.30pm

Friday 9.30am – 12.30pm

Please feel free to call in or phone us. We look forward to seeing you!

Ty Haul Family Centre
Ysgol Maes Y Felin
Ynyswen, Felinfoel, Llanelli
SA14 8BE

All Enquires:- ABowness@cccpartners.org.uk
Call 01554 742498 felinfoelfamilycentre@btinternet.com





Garnant Family Centre

Tots Ty Ni

Garnant Family Centre allows parents the opportunity to learn new skills and attend courses. We provide free crèche facilities for those attending our courses.

ACTIVITIES INCLUDE:

- * Healthy Lunch Club (Tuesdays)
- * Health Visitor Sessions - Baby Clinic
- * Outings and Trips throughout the year
- * Arts and Crafts
- * Computer Access
- * Language and Play
- * Parenting/Adult Courses and Workshops
- * Outdoor Play
- * User led Activities
- * Baby Group - weaning and baby yoga

"It's a lovely place to have a cuppa with other mums. The staff are very friendly and always make you feel welcome."

OPENING TIMES

- Monday** 9.00am - 2.30pm (Drop in Session)
Tuesday 9.00am - 2.30pm (Lunch Club/Baby Clinic)
Wednesday 9.00am - 1.30pm (Baby Group)

Trips, parties and lots of play, Something different everyday!

Garnant Family Centre
25 Maes Y Bedol, Garnant
Ammanford, Carmarthenshire
SA18 2EP

All Enquires:-

Call 01269 825941

tots.tyni@btconnect.com



Llanybydder Family Centre

Ty'r Teulu

Llanybydder Family Centre is a place where families meet and make friends in a friendly and welcoming environment. Parents and children are offered a range of activities and share new and happy experiences.

ACTIVITIES INCLUDE:

- * Language and Play sessions
- * Baby Massage Classes
- * Outdoor Play Area
- * Healthy Lunch Club
- * Parenting Classes
- * Arts and Crafts
- * Monthly Trips/Days Out
- * Early Learning/Child Development Support

"I feel the family centre has boosted my confidence in meeting people."

OPENING TIMES

Monday – Thursday 9.00 am to 3pm

Friday 9.00am – 11.30am

Open all year round and free to all!

Ty'r Teulu Family Centre
Llansawel road
Llanybydder
Lampeter
SA40 9RN

All Enquires:-

Call 01570 480500

llanybdddferfc@btinternet.com





Morfa Family Centre @ Morfa Children's Centre

At Morfa Family Centre we aim to offer a relaxing, non-judgemental service where families and children can meet new friends, play, learn and have fun.

ACTIVITIES INCLUDE:

- * Language & Play
- * Outings & Daytrips
- * Messy Play
- * Healthy Breakfast & Lunch Club
- * Cooking
- * Family Fitness sessions
- * Stories & Rhymes
- * Baby Clinic
- * Family Fun Days
- * Arts & Craft
- * Adult Courses
- * Dads' Group
- * Baby Group
- * Baby Massage

"The Family Centre has kept me sane for the past two years. I get to talk to other adults with a common link - being parents!"



OPENING TIMES

The centre is open 5 days a week with services to support families
Monday & Tuesday centre operated by Flying Start

Wednesday

- 9 – 10 Breakfast club
- 10 – 11.30 Little Stars Toddler Time
- 12 – 1 Lunch club
- 1.30 – 3 Bright Stars Parent & Toddler Activity Time

Thursdays

- 9 – 10 Breakfast club
- 10 – 11.30 Laugh & Learn
- 12 – 1 Lunch club
- 1.30 – 3 Teeny totz baby group

Fridays

- 9 – 10 Breakfast club
- 10 – 10.45 Startotz
- 10.45 – 11.30 Story puppet and rhyme time
- 12 – 1 Lunch club
- 1.30 – 3 Dads' group

Take some time out and join us!

Morfa Family Centre
Ysgol Maes Y Morfa
School Road
Morfa, Llanelli
SA15 2AP

All Enquires:-

Call 01554 742402

LisaNicholas@cccpartners.org.uk
morfa@btconnect.com

Pencader Family Centre

Yr Hen Gapel

The Centre is a thriving fun place where preschool children enjoy an exciting and stimulating environment to play in. The staff from the centre offer support and advice for parents and carers. Courses are also provided regularly for parents to attend.

ACTIVITIES INCLUDE:

- * Language and play courses
- * Adult Classes
- * Arts & Crafts
- * Child Safety
- * Animal studies
- * Cooking
- * Food Co-operative
- * Lunch Club
- * Outings and Daytrips
- * Messy Play
- * Early Learning Support
- * Computers
- * Outdoor Play

Forget about the housework and chores to be done, take some time out and bring the children...

OPENING TIMES

- Tuesday** 9.00am – 3.00pm
Wednesday 9.00am – 12.30pm
Thursday 9.00am – 3.00pm

For those local parents who are unable to attend the centre we have an outreach worker who can do home visits.

Pencader Family Centre
Yr Hen Gapel
Pencader
Carmarthenshire
SA39 9BP

All Enquires:-

Call 01559 384490

Email: pencaderfamilycentre@btinternet.com





St Paul's Family Centre

A welcoming, non-judgemental, relaxed atmosphere – we aim to provide a service that enables people to exercise more control over their lives...

ACTIVITIES INCLUDE:

- * Flying Start Nursery
- * Family fun days
- * User led activities
- * Playschemes
- * Parent and Toddler Group
- * Outings and Daytrips
- * Adult Courses
- * After School Clubs

"My second home and family! I wouldn't have survived without the centre over the past two years."

OPENING TIMES

Monday	9.00am – 11.30am Flying Start Nursery 1.00pm – 3.00pm Parent and Toddler Group
Tuesday	9.00am – 11.30am Flying Start Nursery 11.30am – 1.00pm Flying Start Baby Clinic 1.00pm – 3.00pm Parent and Toddler Group
Wednesday	9.00am – 11.30am Flying Start Nursery 12.30pm – 3.30pm Lunch Club and Courses
Thursday	9.00am – 11.30am Flying Start Crèche 1.00pm – 3.00pm Course 3.30pm – 5.30pm After School Club
Friday	9.00am – 11.30am Flying Start Crèche 11.30am – 2.00pm Staff Admin

"What a set-up! What an amazing place!"

St Paul's Family Centre
Ger y Llan
Bigyn Park Terrace
Llanelli
SA15 1DP

All Enquires:-

Call 01554 775338

saintpaulsfc@googlemail.com



Trimsaran Family Centre

Bobol Bach

Bobol Bach Family Centre provides a warm, safe, happy environment in which pre-school children can play and learn.

ACTIVITIES INCLUDE:

- * Language and Play
- * Outings and Trips
- * Arts and Crafts
- * New Families sessions
- * Outdoor Play
- * Dads Group
- * Healthy Lifestyles
- * Baby Group
- * Accredited Training
- * User Led Activities
- * Flower Art

"We play we learn we sing we share, There's lots to do and people who care, Everything's right on Track at Trimsaran's Bobol Bach"

OPENING TIMES

Monday	9.30am - 12.30pm (Open Session)
Tuesday	9.30am - 2.30pm (Open session includes Lunch Club)
Wednesday	9.30am - 2.30pm (Open session includes Lunch Club)
Thursday	9.30am - 12.30pm (Baby Group and New Families Session)
Friday	9.30am - 1pm (Dads Group)

Activities that raise self-esteem, confidence and promote a sense of wellbeing

Trimsaran Family Centre
Miners Welfare Hall
Heol Llanelli
Trimsaran
Kidwelly
SA17 4AA

All Enquires:-

Call 01554 810532



Trimsaran
Family Centre





Tumble Family Centre

Tumble Family Centre is an open access, family support provision where pre-school children and their parents/carers can play, learn and socialise in a safe and friendly environment.

ACTIVITIES INCLUDE:

- * Language and play
- * Healthy Lifestyles
- * Outings and Daytrips
- * High Quality Play Environment with a safe garden
- * Promoting Childhood Independence
- * Parenting Courses
- * User led activities

"It was brilliant to come here because I didn't know anyone in the area and now I know loads."

OPENING TIMES

Monday	9.00am – 3.30pm
Tuesday	closed
Wednesday	9.00am – 12.30pm
Thursday	9.00am – 3.30pm
Friday	9.00am – 3.30pm

"...here I feel really safe and it's welcoming. I can relax and I know my children are looked after."

Tumble Family centre
Heol y Neuadd
Tumble
Llanelli
SA14 6EL

All Enquires:-

Call 01269 844562



Tŷ Enfys Family Centre

Our Family Centre aims to promote and protect Health and relieve stress within family relationships by the provision of a safe, stimulating and relaxing environment.

ACTIVITIES INCLUDE:

- * Language and play courses
- * Breakfast Club (Tuesday)
- * Outings and Daytrips
- * Messy Play!
- * First Aid
- * Computer Courses
- * 'Me' Time
- * Lunch Club (Wednesday)
- * Digital Photography
- * Arts & Crafts
- * Child Safety
- * Dads' Group
- * Relaxation activities
- * Group for families of 4-10yr olds

"Ty Enfys is a place to make friends, build confidence and it offers advice and support to those who want it".

OPENING TIMES

Monday (Dads' Group)	09.30am - 2.30pm
Thursday	9.15am - 2.45pm

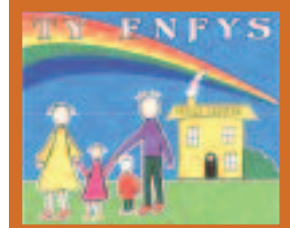
Also – Special Events held regularly. Phone or call in for details

The Family Centre exists to offer help or advice to all who seek it.

Ty Enfys Family Centre
2 Ynys Las
Cefn Caeau
Llywynhendy
Llanelli
SA14 9BT

All Enquires:-

Call 01554 749396
tyenfys@gmail.com





Ty Hapus Family Centre

Our Family Centre offers 'something for everyone' – both adults and children can enjoy a variety of fun activities and courses. Our aim is to have a friendly, safe, enjoyable Centre, accessible to all.

ACTIVITIES INCLUDE:

- * Flying Start Nursery
- * Adult Courses
- * Allotment session
- * Number and Play
- * Cookery
- * Holiday Play schemes
- * Dads' group
- * Daytrips
- * Language and Play
- * Arts & Crafts
- * Early Learning Support
- * Two After School Clubs

We also have a safe and child friendly outside play area!

OPENING TIMES

Monday - Friday 9am – 11.30am - Flying Start Playgroup

Monday, Tuesday & Wednesday
1pm – 3pm - Open session/ course

Tuesday & Thursday
3.30pm - 5pm - After school club

Thursday & Friday 1pm – 3pm - Dads group

Every other Saturday 10am -12.30pm - Satur-daddy

"The Family Centre is brilliant and a good place to make new friends. The centre encourages children to play, communicate and share with others"

Ty Hapus Family Centre
114 Park Hall
Carmarthen
Carmarthenshire
Wales, SA31 1JG

General Enquires:-

Call 01267 223020

Email – sue.tyhapus@gmail.com



Carmarthen Family Centre

Tŷ Ni

We offer support to parents with young children enabling them to make the most of this important time together.

Ty Ni offers a comfortable and secure place to play, meet and talk

ACTIVITIES INCLUDE:

- * Open-access parent & toddler sessions
- * Breast-feeding support
- * Language & Play
- * Dads' Playtime session
- * Welsh Classes
- * First Aid Classes
- * Courses to support parents' learning journey towards future employment
- * Baby massage classes
- * Art & Craft
- * Parenting Programmes
- * Day-trips
- * Summer Playscheme

"Parenting programmes are fun and help parents to build strong relationships with their children."

OPENING TIMES

Monday - Friday	09.30am - 11.30am
Monday - Friday	12:30pm – 3.00pm Flying Start Crèche
Wednesday	3.30 – 6.30 Supervised Contact Sessions
Saturday	10.00 – 17.00 Supervised Contact Sessions

"We love messy play at Ty Ni!"

TY NI
21 Chapel Street,
Wood's Row,
Carmarthen. SA31 1QE

For further information

Call 01267 222443



Map of Family Centres

